

RPR Technologies



RPR 1032

02.10.2018

RPR 1032



- 1032
 - 10 indicates that this is a completely new range
 - 32 indicates the nominal power
- Represents the next generation of Induction machine
 - Smaller in weight and size
 - The latest and newest technology on the market
 - Much more digitalized
 - Less maintenance



RPR 1032 Electrical Requirements



Power supply:

- 40 kVA, 3-phase 360-500 V, 50/60 Hz
- The power source must be 3-phase, 63 Amp fused

The machine is delivered with 5 m power cable and connector of EU standard 5 pins 400 V, 63 Amp



Technical Data



- Small and lightweight

Transformer	10:1
Max Output Voltage Transformer	60 V
Max Output Ampere Transformer	2 200 A
Weight Transformer incl. Induction head: 15 m cable	14,8 Kg
25 m cable	30,2 Kg
Weight Transformer unit	2,6 Kg
Weight and size Induction head	11 cm 1,3 Kg
Weight Transformer, induction head and 2 m cable	5 Kg
Coating removal thickness	0-6 mm

32,5 kW	
Weight (w/carriage)	75 (98) kg
Size (w/carriage) W x L x H	35x60x78 (60x80x86) cm
Input Voltage	3 x 360 – 500 V
Input kVA	40 kVA
Input Hz	50 – 60 Hz
Input Ampere	63 Amp
Cooling water	Min. 12 L/min – 3 bar
Output Max kW	32,5 kW
Output Hz	10-40 kHz



Technical Features



- Touch screen control panel
- Control panel on HHT
- Outlet socket for remote control panel
- Standard cable length for handheld transformer is 15 or 25m
- 20 extension cable available for the 15m transformer
- Quick connections
- Practical carriage (23 kg) included
- External water filter and pressure regulator
- 5 m fixed power cable
- Compatible with all diesel generators
- Internal capacitors
- Exchangeable zipper-locked Kevlar sleeve for the cables packages
- Minimized condensation issues
- Phase indifferent
- Max size on induction head 10 cm



External Display

- External display with all the functional features
- Equipped with electromagnet that can be attached at working location



RPR 1032 – Induction Unit

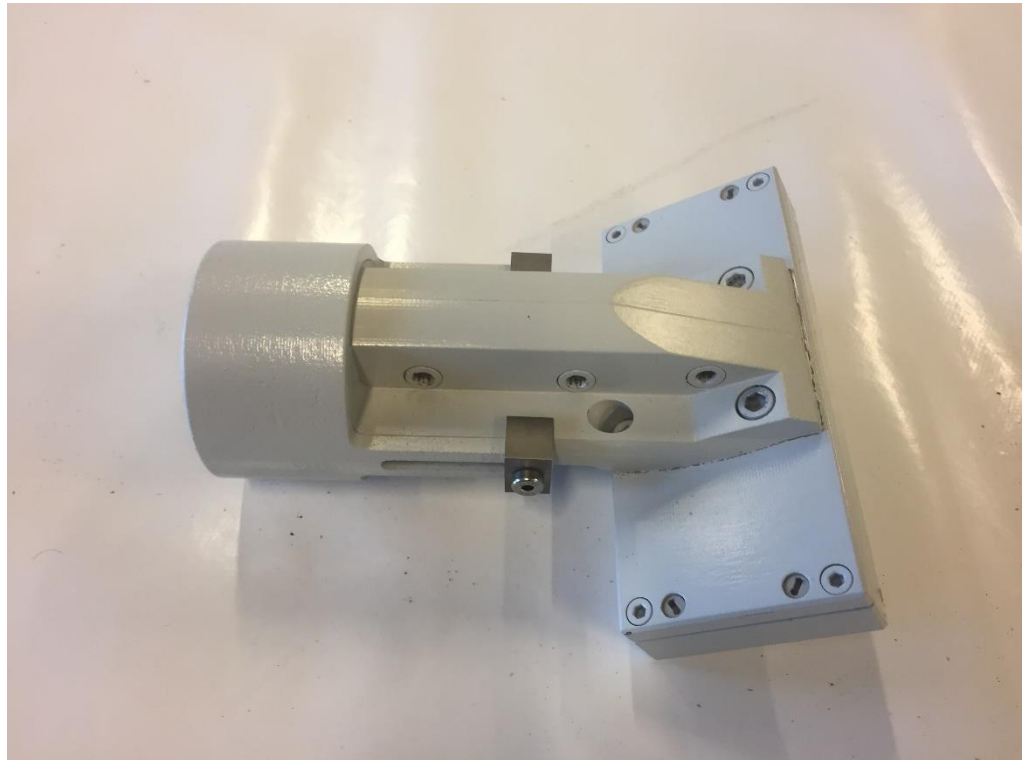


- Total weight of the system including inductor head and carriage
 - with 15 m cable: 115 kg
 - with 25 m cable: 130 kg
- The machine can be lifted in eyelets on top of the frame
- Available working ranges 15 m, 25 m and 35 m
- Unless otherwise agreed, the machine is shipped on a standard 120 x 80 EURO pallet with frames

Induction head



- Smart construction
- New reinforced ceramic tile material
- Can be dismantled by customer, easy to replace worn-out parts
- Exchangable ceramic sliders underneath the induction head
- Cheaper maintenance



Comparison



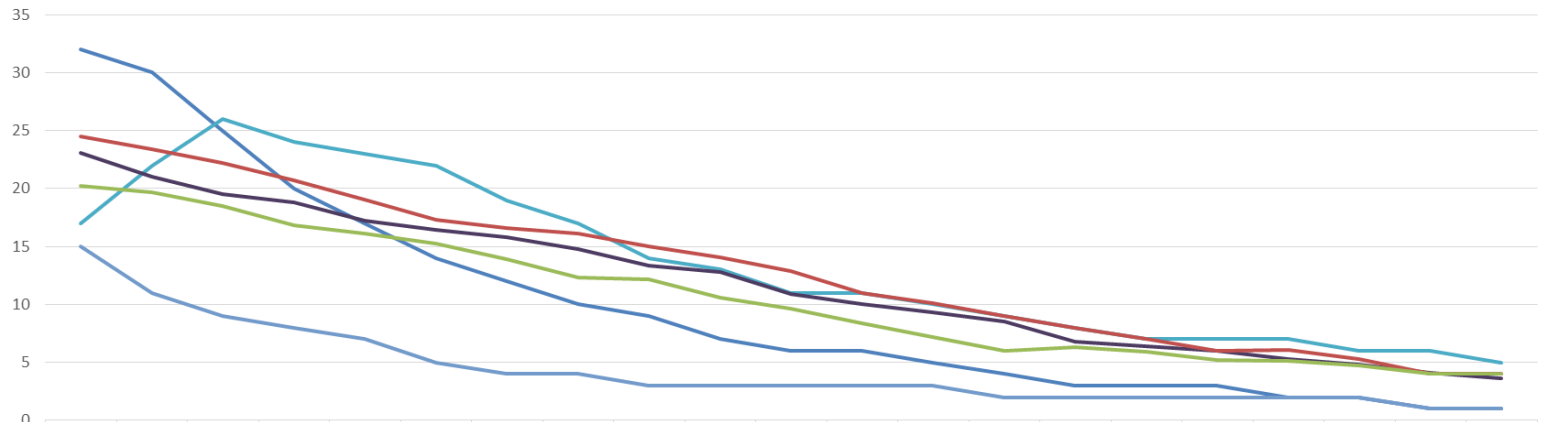
RPR 1650-2		RPR 1032
255 Kg	Weight Generator	98 Kg
70 kVA	Power supply	40 kVA
3 x 360 – 500 V	Voltage	3 x 360 – 500 V
50 kW	kW Generator	32,5 kW
125 Amp	Ampere	63 Amp
12L/min. Minimum 4 Bar	Cooling water	12L/min. Minimum 3 Bar



KW Comparison 1650 vs 1032



Diagrammittel

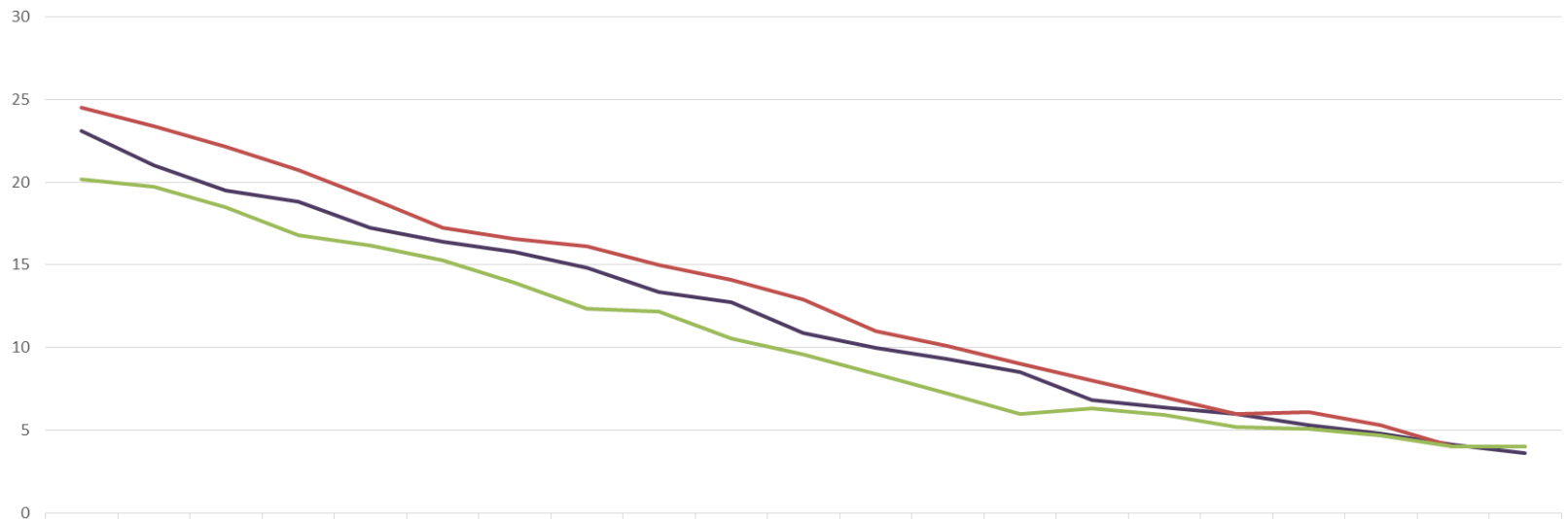


	0mm	1mm	2mm	3mm	4mm	5mm	6mm	7mm	8mm	9mm	10mm	11mm	12mm	13mm	14mm	15mm	16mm	17mm	18mm	19mm	20mm
T=4:1	32	30	25	20	17	14	12	10	9	7	6	6	5	4	3	3	3	2	2	1	1
T=3:1	17	22	26	24	23	22	19	17	14	13	11	11	10	9	8	7	7	7	6	6	5
T=4:1 XS	15	11	9	8	7	5	4	4	3	3	3	3	3	2	2	2	2	2	2	1	1
1032 10:1 25m	23,1	21,04	19,5	18,8	17,25	16,41	15,8	14,8	13,35	12,76	10,9	10	9,3	8,5	6,8	6,4	6	5,3	4,8	4,1	3,6
1032 10:1 15m	24,52	23,38	22,17	20,74	19,05	17,27	16,56	16,1	15	14,1	12,9	11	10,1	9	8	7	6	6,1	5,3	4	4
1032 10:1 15m +20m	20,2	19,7	18,5	16,8	16,15	15,26	13,94	12,33	12,17	10,56	9,6	8,4	7,2	6	6,3	5,9	5,2	5,1	4,7	4	4

KW Comparison 1032



Diagramtittel



	0mm	1mm	2mm	3mm	4mm	5mm	6mm	7mm	8mm	9mm	10mm	11mm	12mm	13mm	14mm	15mm	16mm	17mm	18mm	19mm	20mm
1032 10:1 25m	23,1	21,04	19,5	18,8	17,25	16,41	15,8	14,8	13,35	12,76	10,9	10	9,3	8,5	6,8	6,4	6	5,3	4,8	4,1	3,6
1032 10:1 15m	24,52	23,38	22,17	20,74	19,05	17,27	16,56	16,1	15	14,1	12,9	11	10,1	9	8	7	6	6,1	5,3	4	4
1032 10:1 15m +20m	20,2	19,7	18,5	16,8	16,15	15,26	13,94	12,33	12,17	10,56	9,6	8,4	7,2	6	6,3	5,9	5,2	5,1	4,7	4	4